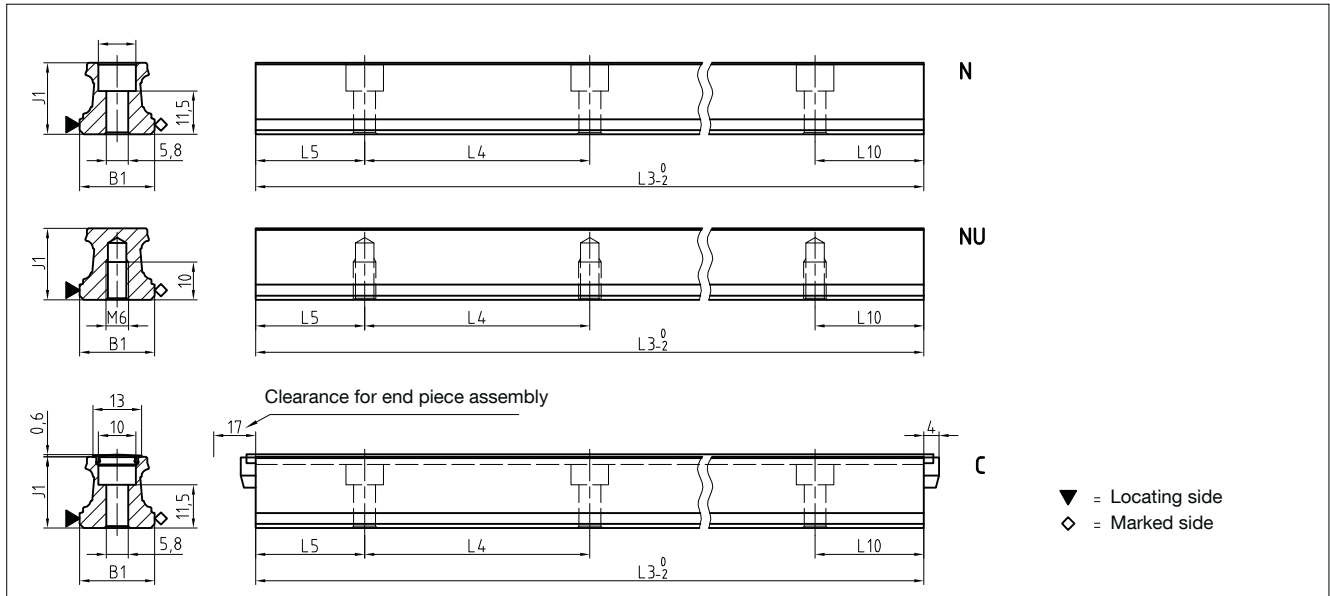


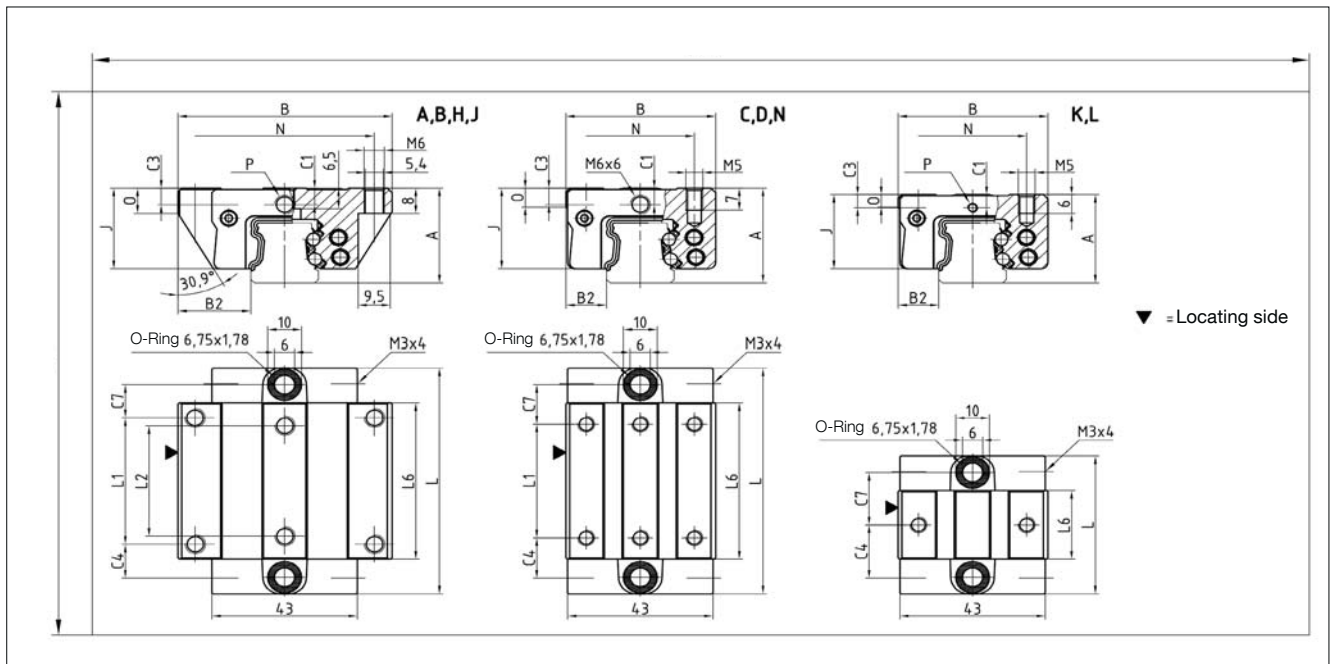
4.2 Technical data and options

BM Size 20

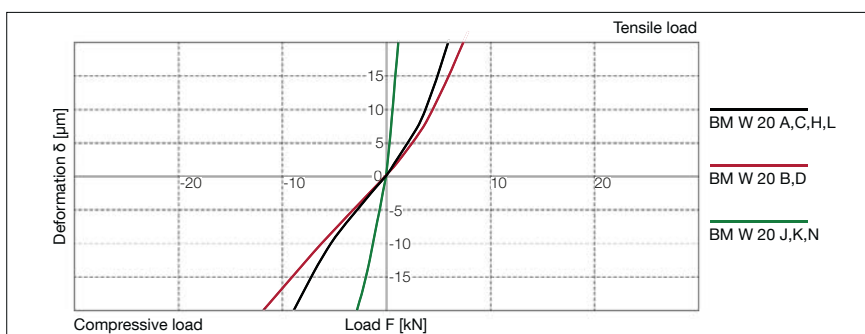
BM S 20 Drawings



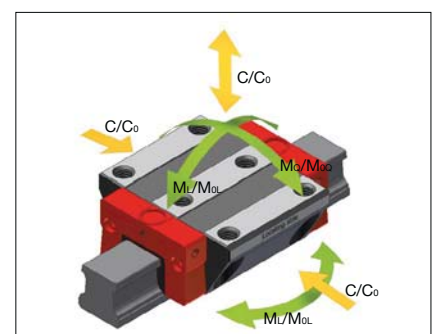
BM W 20 Drawings



BM W 20 Rigidity diagram



BM W 20 Load rating



4.2 Technical data and options

BM Size 20

BM S 20 Dimensions



	BM S 20-N	BM S 20-NU	BM S 20-C		
B1: Rail width	20	20	20		
J1: Rail height	19	19	19		
L3: Rail length max.	3000	3000	3000		
L4: Spacing of fixing holes	60	60	60		
L5/L10: Position of first/last fixing hole	28.5	28.5	28.5		
Gew.: Rail weight, specific (kg/m)	2.2	2.3	2.1		

Available options for BM S 20



BM W 20 Dimensions and capacities



	BM W 20-A	BM W 20-B	BM W 20-C	BM W 20-D	BM W 20-H	BM W 20-J	BM W 20-K	BM W 20-L	BM W 20-N		
A: System height	30	30	30	30	28	28	28	28	30		
B: Carriage width	63	63	44	44	59	59	44	42	44		
B2: Distance between locating faces	21.5	21.5	12	12	19.5	19.5	12	11	12		
C1: Position of center front lube hole	5.2	5.2	5.2	5.2	4	4	4	4	5.2		
C3: Position of lateral lube hole	5.2	5.2	5.2	5.2	3.2	3.2	3.2	3.2	5.2		
C4: Position of lateral lube hole	10.8	18.8	12.8	13.8	14.8	18.9	18.9	14.8	18.9		
C7: Position of top lube hole	10.3	18.3	12.3	13.3	14.3	18.4	18.4	14.3	18.4		
J: Carriage height	25.5	25.5	25.5	25.5	23.5	23.5	23.5	23.5	25.5		
L: Carriage length	71.5	87.5	71.5	87.5	71.5	47.7	47.7	71.5	47.7		
L1: Exterior fixing hole space	40	40	36	50	32	-	-	32	-		
L2: Interior fixing hole space	35	35	-	-	-	-	-	-	-		
L6: Steel body length	49.5	65.5	49.5	65.5	49.5	25.7	25.7	49.5	25.7		
N: Lateral fixing hole spacing	53	53	32	32	49	49	32	32	32		
O: Reference face height	8.5	8.5	6.5	6.5	10	10	6.5	6.5	6.5		
P: Connecting thread (MxL)	6x6	6x6	6x6	6x6	3x5.5	3x5.5	3x5.5	3x5.5	6x6		
Capacities and weights											
C0: Static load capacity (N)	31400	41100	31400	41100	31400	13100	13100	31400	13100		
C100: Dynamic load capacity (N)	14400	17400	14400	17400	14400	8400	8400	14400	8400		
MOQ: Static cross moment capacity (Nm)	373	490	373	490	373	150	150	373	150		
MOL: Static longitud. moment capacity (Nm)	292	495	292	495	292	58	58	292	58		
MQ: Dyn. cross moment capacity (Nm)	171	206	171	206	171	99	99	171	99		
ML: Dyn. longitude moment capacity (Nm)	134	208	134	208	134	37	37	134	37		
Gew: Carriage weight (kg)	0.5	0.6	0.4	0.5	0.4	0.3	0.3	0.4	0.3		

Available options for BM W 20

