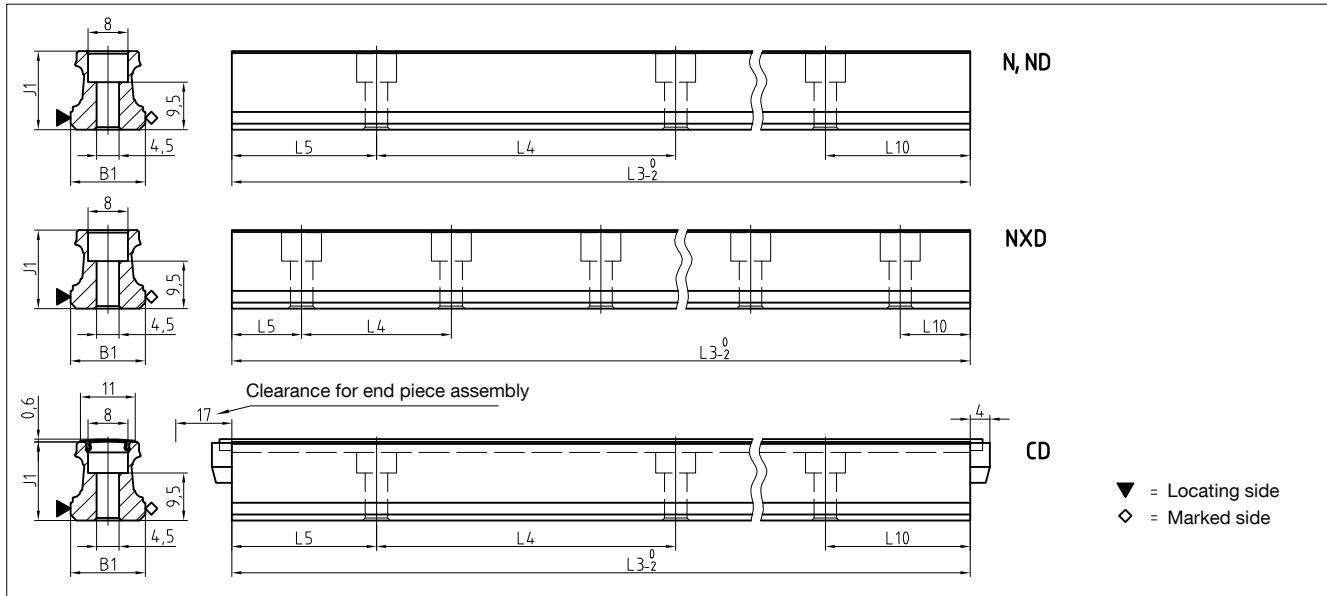


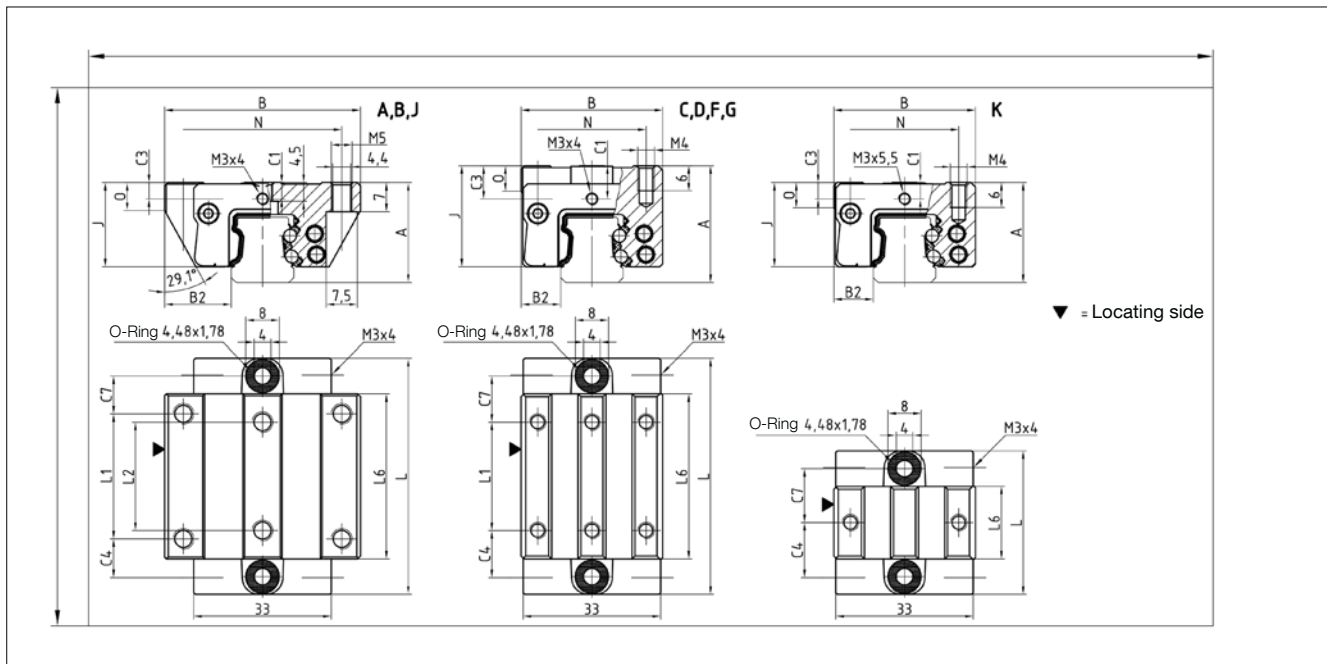
# 4.2 Technical data and options

## BM Size 15

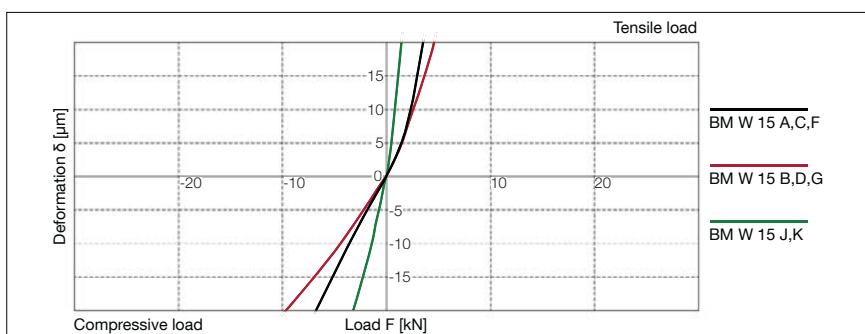
### BM S 15 Drawings



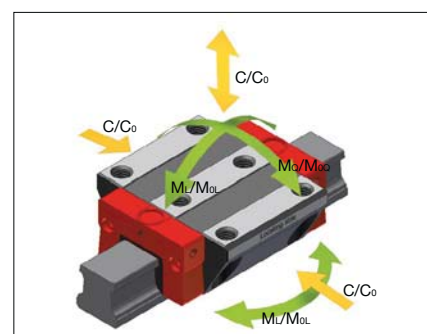
### BM W 15 Drawings



### BM W 15 Rigidity diagram



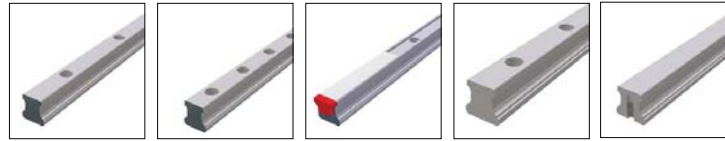
### BM W 15 Load rating



## 4.2 Technical data and options

### BM Size 15

#### BM S 15 Dimensions



	BM S 15-ND	BM S 15-NXD	BM S 15-CD	BM S 15-N	BM S 15-NU
B1: Rail width	15	15	15	15	15
J1: Rail height	15.7	15.7	15.7	15.7	15.7
L3: Rail length max.	1500	1500	1500	3000	3000
L4: Spacing of fixing holes	60	30	60	60	60
L5/L10: Position of first/last fixing hole	28.5	13.5	28.5	28.5	28.5
Gew.: Rail weight, specific (kg/m)	1.4	1.4	1.3	1.4	1.4

#### Available options for BM S 15



#### BM W 15 Dimensions and capacities



	BM W 15-A		BM W 15-B		BM W 15-C		BM W 15-D		BM W 15-F		BM W 15-G		BM W 15-J	BM W 15-K
A: System height	24	24	28	28	24	24	24	24	24	24	24	24	24	24
B: Carriage width	47	47	34	34	34	34	52	34	34	34	34	34	52	34
B2: Distance between locating faces	16	16	9.5	9.5	9.5	9.5	18.5	9.5	9.5	9.5	9.5	9.5	18.5	9.5
C1: Position of center front lube hole	4	4	8	8	4	4	4	4	4	4	4	4	4	4
C3: Position of lateral lube hole	4	4	8	8	4	4	4	4	4	4	4	4	4	4
C4: Position of lateral lube hole	9.3	17.3	11.3	19.3	11.3	19.3	14.8	14.8	11.3	19.3	14.8	14.8	14.8	14.8
C7: Position of top lube hole	9.1	17	11.1	19	11.1	19	14.6	14.6	11.1	19	14.6	14.6	14.6	14.6
J: Carriage height	20.2	20.2	24.2	24.2	20.2	20.2	20.2	20.2	20.2	20.2	20.2	20.2	20.2	20.2
L: Carriage length	56.6	72.5	56.6	72.5	56.6	72.5	37.6	37.6	56.6	72.5	37.6	37.6	37.6	37.6
L1: Exterior fixing hole spacing	30	30	26	26	26	26	-	-	26	26	-	-	-	-
L2: Interior fixing hole spacing	26	26	-	-	-	-	-	-	-	-	-	-	-	-
L6: Steel body length	39.6	55.5	39.6	55.5	39.6	55.5	20.6	20.6	39.6	55.5	20.6	20.6	20.6	20.6
N: Lateral fixing hole spacing	38	38	26	26	26	26	41	26	26	26	41	26	26	26
O: Reference face height	7	7	6	6	6	6	6	6	6	6	6	6	6	6

#### Capacities and weights

C0: Static load capacity (N)	19600	22900	19600	22900	19600	22900	8500	8500
C100: Dynamic load capacity (N)	9000	11400	9000	11400	9000	11400	5200	5200
MOQ: Static cross moment capacity (Nm)	181	218	181	218	181	218	78	78
MOL: Static longitud. moment capacity (Nm)	146	198	146	198	146	198	30	30
MQ: Dyn. cross moment capacity (Nm)	83	108	83	108	83	108	48	48
ML: Dyn. longitud. moment capacity (Nm)	67	96	67	96	67	96	18	18
Gew: Carriage weight (kg)	0.2	0.3	0.3	0.3	0.2	0.2	0.1	0.2

#### Available options for BM W 15

