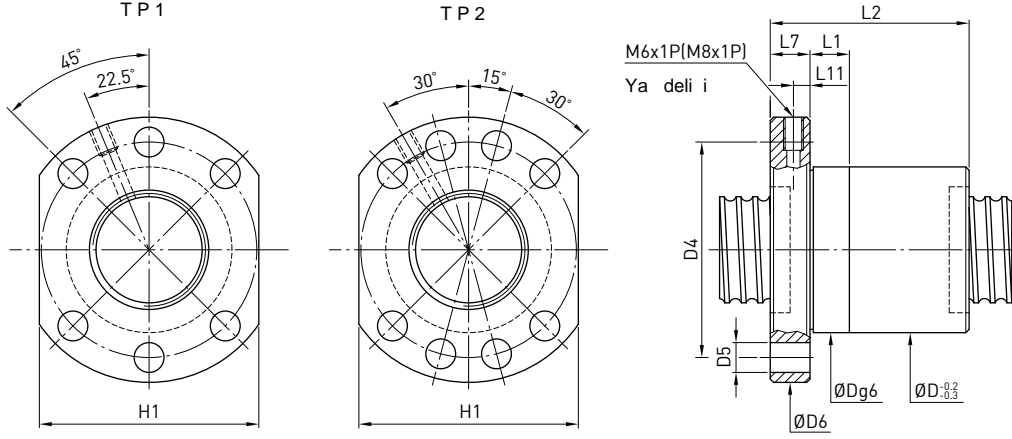


FSI Tip Somunlar

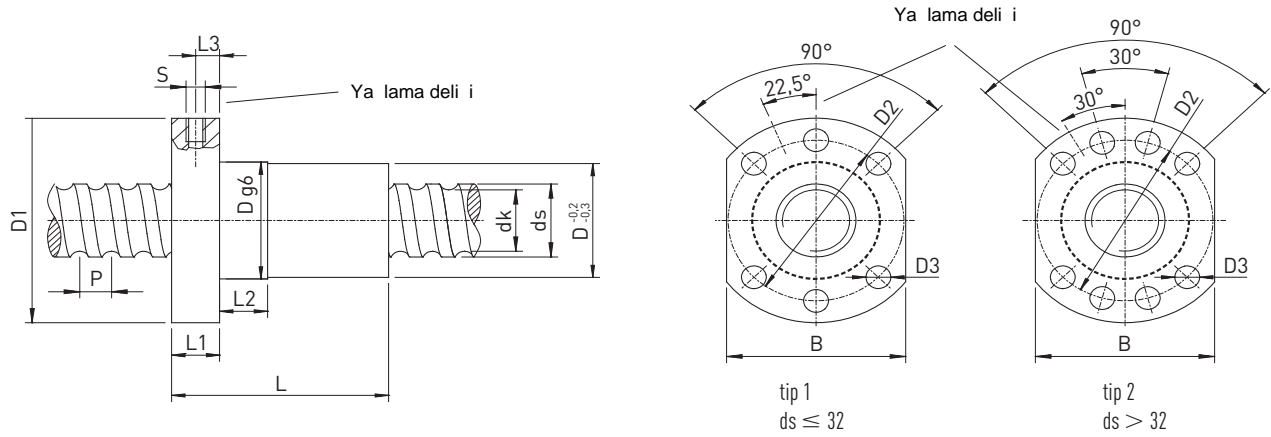
FSI (DIN 69051 Part 5)



Tip	Ölçü		Bilya çapı	Dönü	Dinamik yük 1x10 ⁶ revs C (kgf)	Statik yük Co (kgf)	D	D4	Flan delik No.	D5	D6	H1	L1	L2	L7	L11	ya delik		
	Mil çapı	Hatve																	
16-5T3	16		3.175	3	1000	2000	28	38	6	5.5	48	40	10	40	10	5	M6x1P		
20-5T3	20	5		3	1160	2660	36	47	6	6.6	58	44	10	44	10	5	M6x1P		
20-5T4				4	1490	3550	36	47	6	6.6	58	44	10	52	10	5	M6x1P		
25-5T3	25	10		3	1320	3490	40	51	6	6.6	62	48	10	44	10	5	M6x1P		
25-5T4			4	1690	4660	40	51	6	6.6	62	48	12	52	10	5	M6x1P			
25-10T3			3	2160	4860	40	51	6	6.6	62	48	16	65	10	5	M6x1P			
32-5T3	32	5	3.175	3	1500	4660	50	65	6	9	80	62	10	46	12	6	M6x1P		
32-5T4				4	1920	6210	50	65	6	9	80	62	10	53	12	6	M6x1P		
32-5T6				6	2730	9320	50	65	6	9	80	62	10	66	12	6	M6x1P		
32-10T3				10	6.350	3	3650	8660	50	65	6	9	80	62	16	74	12	6	M6x1P
32-10T4	4	4680	11550			50	65	6	9	80	62	16	85	12	6	M6x1P			
40-5T4	40	5	3.175	4	2110	7770	63	78	8	9	93	70	10	53	14	7	M8x1P		
40-5T6				6	2990	11650	63	78	8	9	93	70	10	66	14	7	M8x1P		
40-10T3				10	6.350	3	4030	10680	63	78	8	9	93	70	16	74	14	7	M8x1P
40-10T4						4	5170	14240	63	78	8	9	93	70	16	87	14	7	M8x1P
50-5T4	50	5	3.175	4	2330	9990	75	93	8	11	110	85	10	57	16	8	M8x1P		
50-5T6				6	3310	14980	75	93	8	11	110	85	10	70	16	8	M8x1P		
50-10T3				10	6.350	3	4590	14000	75	93	8	11	110	85	16	78	16	8	M8x1P
50-10T4						4	5880	18660	75	93	8	11	110	85	16	89	16	8	M8x1P
50-10T6				6	8330	28000	75	93	8	11	110	85	16	112	16	8	M8x1P		

FSC Tip Somunlar

FSC (DIN 69051 Part 5)



Seri	ds ±0,1	P	D g6	D1	D2	D3	Tip	L	L1	L2	L3	S	B	dk	Din yük C _{dyn} [N]	Sta. yük C ₀ [N]	Eksenel bo luk max. [mm]	A ır. [kg/pc.]
R20-20K2-FSC	19,5	20	36	58	50	6,6	1	57	10	10	5	M6	44	17,1	6800	15300	0,04	0,36
R25-25K2-FSC	24,7	25	40	62	51	6,6	1	70	10	16	5	M6	48	22,1	7400	19100	0,04	0,43
R32-32K2-FSC	31,9	32	50	80	65	9,0	1	88	12	20	6	M6	62	28,7	11600	31800	0,04	1,20
R40-40K2-FSC	37,8	40	70	100	85	9,0	2	102	14	25	7	M8 × 1	75	32,9	23000	58400	0,07	1,60